



SECONDARY MP SERIES

JAW CRUSHER

SAFE | RELIABLE | VERSATILE

MP SERIES JAW CRUSHER

Overview

The Sonikh MP Series is engineered for portability and ease to use. The rugged design delivers highly productivity line that are safe to operate, easy for maintenance and earlier uptime availability.

Typical application for our single toggle jaw crusher are in mining, quarrying and recycling, with various application for hardest rock.



HIGHLIGHTS

- HIGH PRODUCTION
- AGGRESSIVE CRUSHING ACTION
- HIGH STRENGTH WELDED MAINFRAME DESIGN
- ACTIVE SETTING CONTROL (ASC)
- SAFE AND EFFORTLESS OPERATION AND MAINTENANCE.



TYPICAL APPLICATION OF OUR MP JAW CRUSHERS ARE

Ore Mining Iron, manganese, chromite, bauxite etc.

Rock Quarries Granite, Quartzite, Dolomite, Limestone, Coal etc.

Construction aggregates and recycled concrete

Sand and Gravel

FEATURES

Both side abrasion resistant side protection plates

FLYWHEEL

Smooth and efficient crushing with high inertia and well balanced flywheels.

BEARINGS

The four large and identical spherical roller bearings.
 • Only the top brands are used

TOGGLE PLATES

Steep angle, lubrication free toggle plate generate extra crushing force and secure drive system.

SINGLE CAST FRONT FRAME


Continuous development of high quality castings with long ribs


HIGH QUALITY JAW PLATES


For maximum wear utilization, jaw plates are interchangeable between the swing and fix jaws as well as reversible top to bottom.

THE SETTING CAN BE ADJUSTED WITH SINGLE WEDGES WITH SHIM PLATES

- Adjustments are mechanical as standard
- A fully automatic hydraulic option is also available to make adjustments even faster and safer

 A long-term investment

 High strength welded mainframe construction.

 Safe and easy to use and maintain

ADVANCED MP JAW TECHNOLOGY

**Adjustments Made
Fast, Safe & Simple**

Innovative in its simplicity, the toggle tensioning system saves time and costs by eliminating the need to adjust springs when changing the setting.

A simple mechanical spring assembly secures each toggle end to its respective toggle seat. By securing each end independently, there is no need to adjust the springs when the setting is changed. Quick to assemble and reliable in operation, the assembly requires no special tools or maintenance.

Sonikh advanced toggle

Design reliably delivers features that can benefit every producer with reduced downtime and lower maintenance costs. Its adjustment, overload relief and chamber clearing can combine to eliminate days of downtime yielding a significant reduction in operating costs year after year.

We do care for nature

Quarries are generally located in remote area. Planning and design of buildings within such surroundings requires special care. Sonikh is well experienced in design for such conditions and take special care in their design and location of structures their is no impact on this environment.



**Multiple available options
to fit every applications,
including**

Feed chute

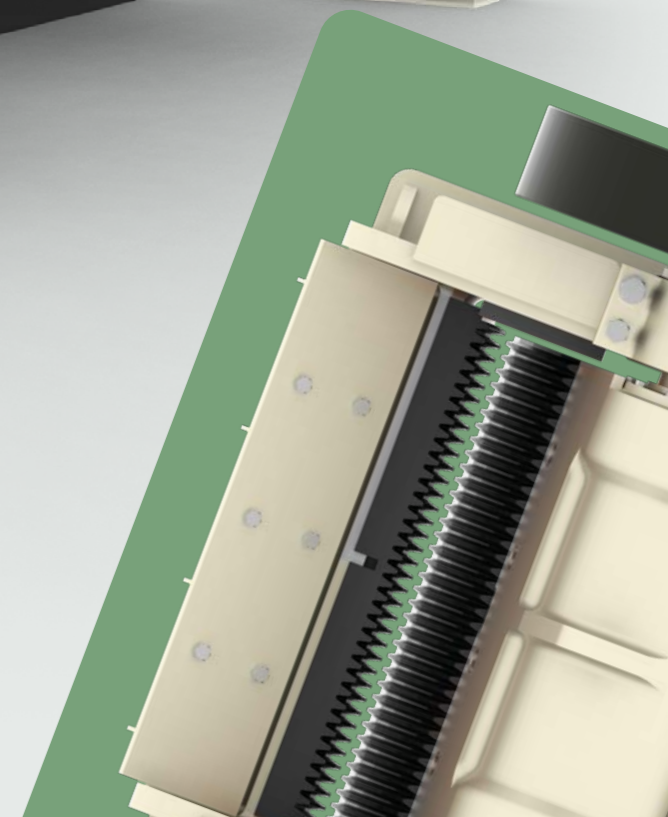
Flywheel and V-belt guards

Motor base with drive system

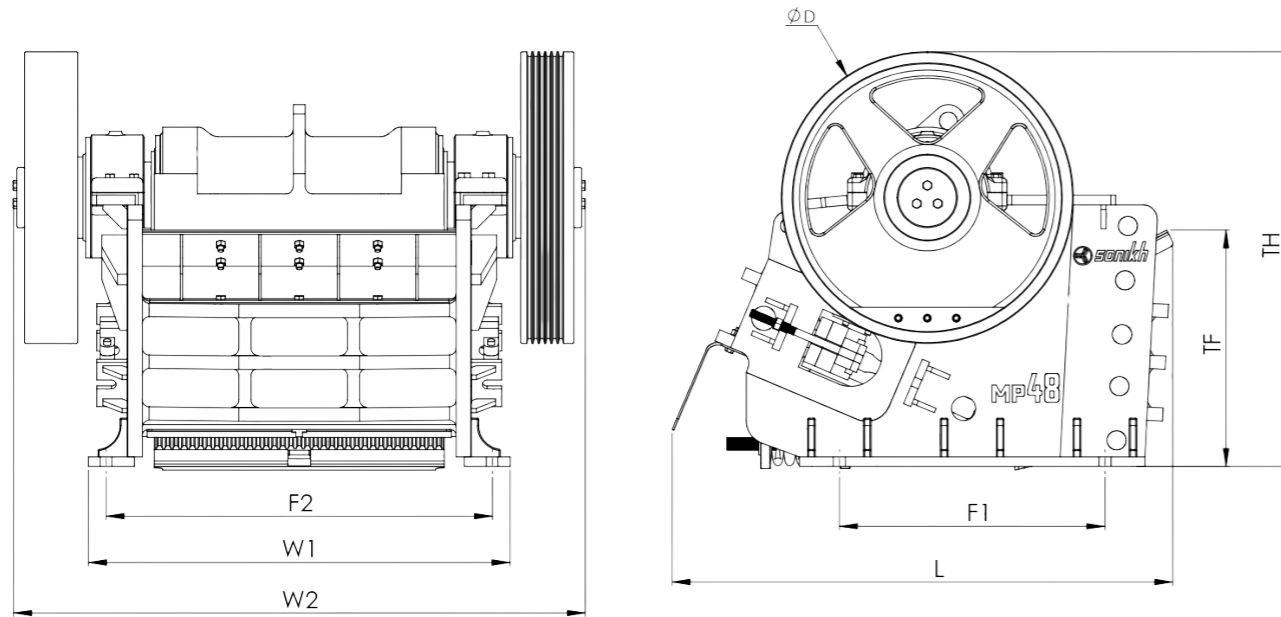
Hydraulic setting adjustment

Optimized nip angle

An optimized nip angle ensures the material moves smoothly down through the crushing chamber increasing the productivity and efficient utilization of the Jaw plates. This design improves productivity and lowers the operational cost per ton.



DIMENSIONS & SPECIFICATIONS



GENERAL DIMENSIONS

MODEL		MP 16	MP 20	MP 24	MP 30	MP 36	MP 42	MP 48	MP 54
DATA	UNIT								
L- Overall Length	MM	1885	1910	1697	1980	2085	2075	2075	2325
TH- Total Height	MM	1340	1440	1335	1684	1720	1720	1720	1783
W1- Width	MM	1000	1050	1110	1300	1485	1620	1746	1983
W2- Overall Width	MM	1365	1570	1624	1822	1763	2112	2385	2432
TF- Total Feed	MM	870	940	835	1028	1028	1025	1025	1100
F1- Foundation	MM	730	730	830	1000	1100	1100	1100	1200
F2- Foundation	MM	820	920	915	1150	1300	1600	1600	1820
D- Flywheel Dia	MM	1000	1000	1000	1100	1100	1200	1200	1250

TECHNICAL SPECIFICATION

MODEL		MP 16	MP 20	MP 24	MP 30	MP 36	MP 42	MP 48	MP 54
MAX. FEED SIZE	MM	150-200	150-200	150-350	150-200	150-200	200-250	200-250	200-250
CAPACITY	MTPH	15-30	16-40	22-50	28-60	35-70	40-80	45-90	48-100
FLYWHEEL SPEED	RPM	350	350	350	340	340	340	320	320
MOTOR POWER	KW / HP	22 / 30	30 / 40	37 / 50	45 / 60	55 / 75	55 / 75	75 / 100	90 / 120
WEIGHT	TON	4.5	5.6	6.5	7.8	10.5	13.5	15.5	17.2

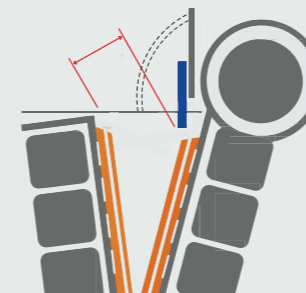
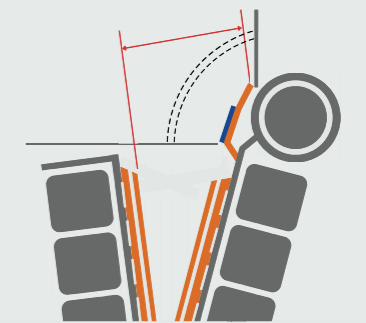
THE JAW CRUSHING RANGE

MODEL		MP16	MP20	MP24	MP30	MP36	MP42	MP48	MP54
FEED OPENING	INCH	16X8/10	20X8/10	24X8/10	30X8/10	36X8/10	42X8/10	48X8/10	54X8/10
Average Capacity in Tons/hr. with Jaw Setting (closed side setting)									
CSS	CAPACITY (MTPH)								
MM (INCH)									
6 (¼)		4-5	5-7	6-8	7-9	8-10	9-11	10-12	11-13
12 (½)		6-8	8-10	10-12	12-14	14-16	15-20	20-25	25-30
20 (¾)		8-10	10-12	12-14	14-16	20-25	25-30	30-35	35-40
25 (1)		12-14	15-18	20-25	25-30	30-34	34-38	38-42	42-45
32 (1 ¼)		15-18	20-25	25-30	30-34	34-38	38-42	42-45	45-48
38 (1 ½)		22-26	28-32	32-36	40-44	44-48	50-55	55-60	60-65
45 (1 ¾)		30-35	35-40	40-45	44-48	50-55	55-60	60-65	65-70
52 (2)		30-40	45-50	50-55	55-60	60-65	65-70	70-75	75-80
65 (2 ½)		-	-	-	60-65	65-70	70-75	75-80	80-85
76 (3)		-	-	-	-	70-75	75-80	80-85	85-90

- NOTE**
- The output in TPH indicated above is based on average hard dry quartz weighting. At least 1.6 ton/m³ when crushed and on continuous feed of graded sizes with fines removed.
 - Capacity may vary by 25% depending on type of rock, gradation and method of feeding.
 - Where no capacity rating is given in the table, it is generally not economical to operate at such a setting.

SONIKH DEFLECTOR PLATES

A deflector plate at the top of the moving jaw means no intrusive cross-wall is required in the feed hopper. All the effective feed opening are active. Material is crushed at the top of the crushing chamber.



COMPETITOR DEFLECTOR PLATES

Cross-wall required in feed hopper to protect top of moving jaw. Stationary cross-wall reduces effective feed opening. Material cannot be crushed until it has dropped a good distance into the crushing chamber.

www.sonikh.com



SERVING EXCELLENCE

"Our Mission is Serving Excellence Through Innovation and Dedication to our Customers."



Certified Manufacturing Company

SONIKH ENGGFAB PVT. LTD.

CORPORATE OFFICE

House No - 009, Street No - 26f
Gujratipada, Angul 759122, Odisha

+91 81178 49168 | +91 81178 59168

info@sonikh.com | sales@sonikh.com

FACTORY

Near RTO Office
Angul - 759132, Odisha, India

SALES / PARTS / SERVICE



Product features and specifications are subject to change without prior notice or obligation. Due to continuous product development, we reserve the right to change the specifications without notice. Photographs and drawings are provided for illustrative purposes only and may vary from the standard product. Sonikh's liability shall be limited to the equipment.